

# Data Sheet

## HS ELEVATED SYSTEM



### Properties

#### Material - Gutter

100% polypropylene copolymer 1st quality, UV protection

#### Maximum load - Spacer

25 Kg/m uniformly.

#### Disinfection of the gutter

It is recommended:

- Sodium Hypochlorite (NaClO) concentration 200 ppm, clearing up afterwards with water
- Hydrogen Peroxide (H<sub>2</sub>O<sub>2</sub>)

#### 020002 | SPACER 1000x235mm



Polipropilene  
Pésig: 76,36 g

#### 030005 | CLIP 50x30.6mm



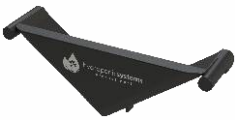
Polipropilene  
Pésig: 78 g

#### 040003 | OUT-FLOW 111x235x165mm



Polipropilene  
Pésig: 76,36 g

#### 040004 | CAP 100x235x60mm



Polipropilene  
Pésig: 76,36 g

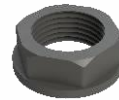
#### 050001 | STEM PP D32-1"



510,32 €

Polypropylene  
Weight: 22 g

#### 050002 | NUT PVC 1"



Pólipropileno  
Peso: 326g

#### 050003 | RUBBER WASHER 1"



Rubberpileno  
Pésig: 76 g

#### 110135 | GUTTER 135x135x0,7mm



Polypropylene  
Weight: 178 g/m<sup>2</sup>

#### 960001 | SUPPORT



Galvanised steel  
Weight: 790 g

#### 960002 | HOOK



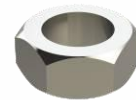
Galvanised steel  
Weight: 52 g

#### 960003 | THREADED ROD M12x250mm



Galvanised steel  
Weight: 180 g

#### 960004 | NUT M12



Galvanised steel  
Weight: 10 g

#### 960005 | TUBE 19x1,5x450mm



Galvanised steel  
Weight: 370 g

#### 960006 | FLANGE 203x7,6mm



Nylon  
Peso bolsa: 200 g

- 990001 | LATTICE 220x140mm
- 990002 | LACQUER LATTICE 220x140mm



Rubberpileno  
Pésig: 76,5 Kg/m